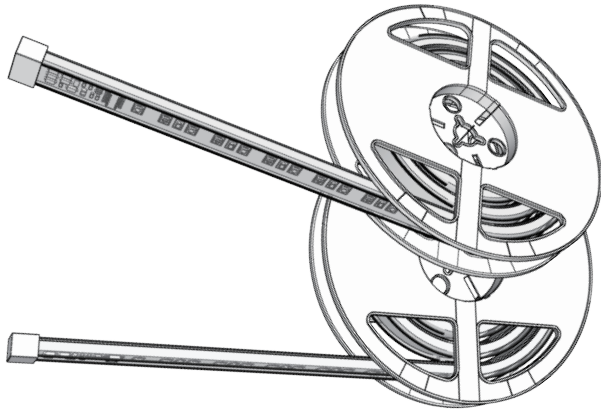
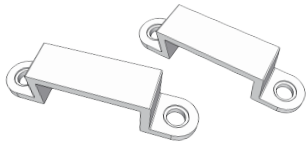


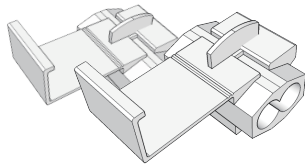
WHAT'S INCLUDED



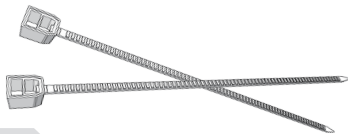
LED STRIP (X2)



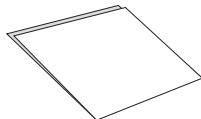
BRACKETS (X6)



SCOTCHLOKS (X4)



ZIP-TIES (X10)



ADHESIVE BOOSTER

SIDEKICK RUNNING BOARD

INSTALLATION MANUAL



OPT7[®]

INSTALLATION STEPS

STEP 1

Open your package, and verify that you have received all items (see section titled 'Package Includes').

Optional: Test your strip first by following Step 5 before mounting.

STEP 2

Thoroughly clean the surface where you plan on mounting the LED strip. (A dirty surface will prevent the strip from attaching firmly.)

STEP 3

Wipe the mounting area with the included adhesive booster.

STEP 4

Firmly press the LED strip to the mounting area, and hold for 3 seconds.

Optional: Screw on the included brackets to strengthen hold.

STEP 5

To power the LED strip, find your vehicle's corresponding wiring:



Optional: Use included Scotchlocks to crimp the wires.

Note: Additional wiring may be needed for longer vehicles.

STEP 6

Use included zip-ties to tuck away excess wiring.

Notice: Please note that on the Sidekick, when the door is open, the door-assist function takes priority over the turn signals.