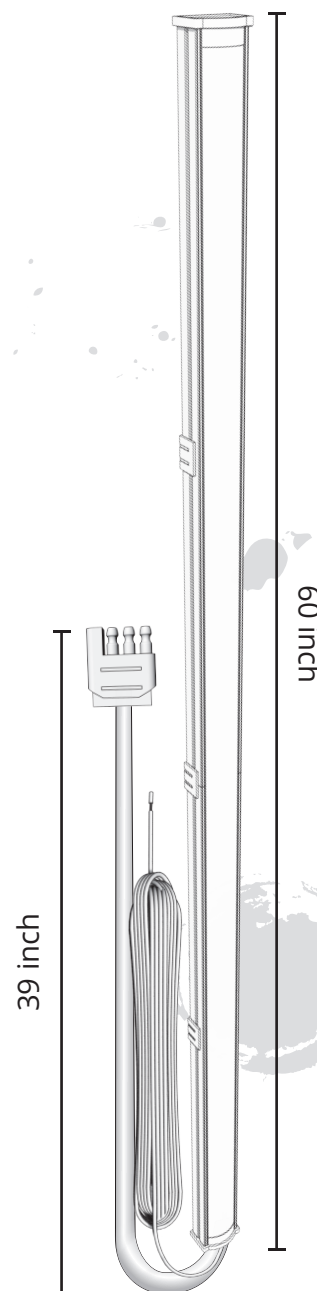


DISCLAIMER

OPT7 Lighting is not liable for damages or personal injuries while installing this product. The Installation Guide is intended as assistance to reduce setup time. OPT7 Lighting assumes no responsibility for improper installation. If you are unfamiliar with your vehicle or inexperienced with aftermarket upgrades, please seek professional assistance.

OPT7

IGNITE INSPIRATION



OPT7

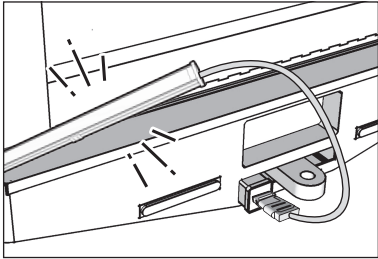
REDLINE TAILGATE CHOICE

INSTALLATION GUIDE

WHAT'S INCLUDED

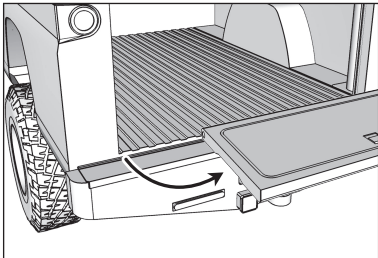
Redline LED Bar X **1**

INSTALLATION



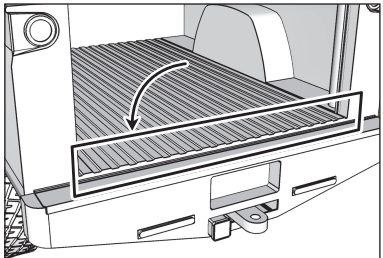
STEP1

Test the Redline LED Bar for function before mounting on vehicle.



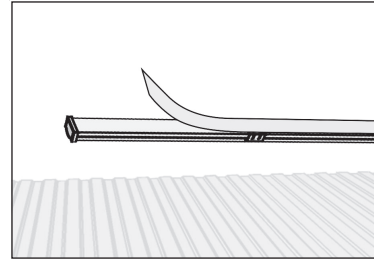
STEP2

Remove tailgate from vehicle, if necessary.



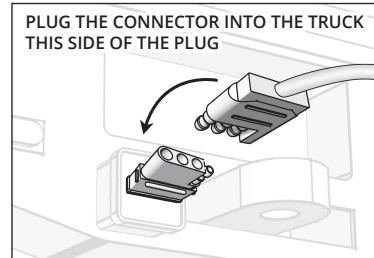
STEP3

Thoroughly clean the area where the Redline LED Bar will be mounted.



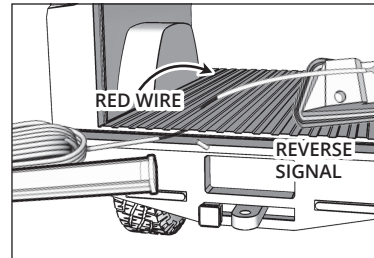
STEP4

On the Redline LED Bar, peel the back off of the adhesive and apply firmly to the cleaned area.



STEP5

Plug the 4-pin flat connector into the proper receptacle on the vehicle.



STEP6

Splice the red wire coming from the Redline LED Bar into the reverse signal on the vehicle.

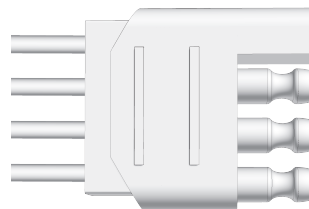
STEP7

Optional: If hard-wiring, use image below to identify wire color functions and pair them to appropriately identified wires on vehicle.

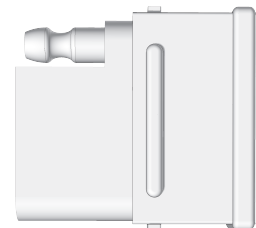


TO REDLINE LED BAR

Ground
Running Light
Left Turn & Brake
Right Turn & Brake



TRAILER HARDWARE HARNESS



White/Ground
Brown/Running Light
Yellow/Left Turn & Brake
Green/Right Turn & Brake