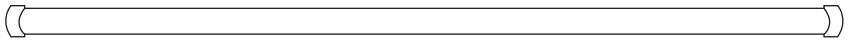


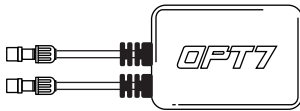
# AURA™ DREAMCOLOR LED LIGHT TUBE GOLF CART

INSTALLATION GUIDE

## COMPONENTS



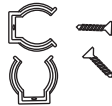
2X36" LED LIGHT TUBE WITH EXTENSION WIRE



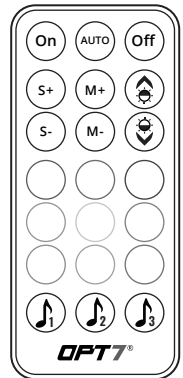
CONTROL BOX (SCAN QR CODE FOR APP USER GUIDE)



HARDWIRE POWER HARNESS

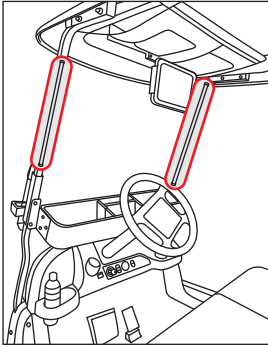


MOUNTING KIT



HAND HELD REMOTE

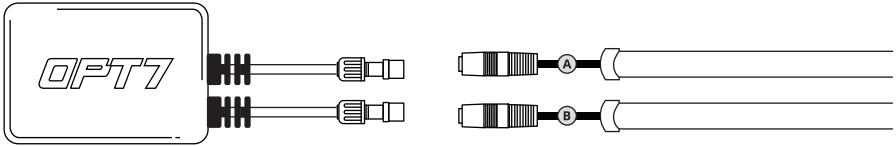
# INSTALLATION



## STEP 1

Determine where to locate the control box and ensure wiring has enough length for light tubes to be installed in desired location.

As shown below, connect all the LED tubes to the control box.



- Ⓐ 1 × 36" LED Light Tube + 8ft extension wire
- Ⓑ 1 × 36" LED Light Tube + 8ft extension wire

### IMPORTANT

The extension wires are on the LED tubes. Lay out the tubes to measure the length prior to install for a successful installation.

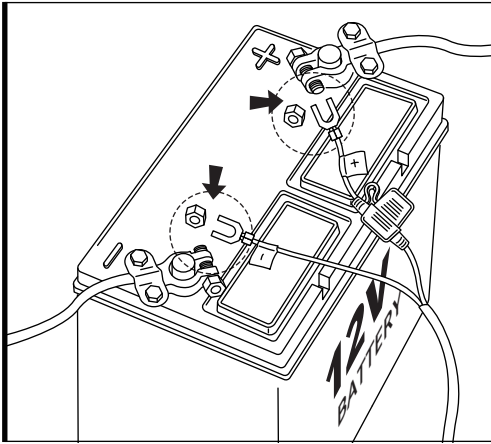


1. Please ensure that the LED bars or strips/control box/wiring all are mounted in areas where will not exceed 85°C or 185°F.
2. Connect only to a 12V battery. Using other voltages may cause overload and serious safety risks.

### IMPORTANT

\*Turning off the OPT7 PLUS completely helps avoid excessive battery consumption and extends the lifespan of the OPT7 light kits.

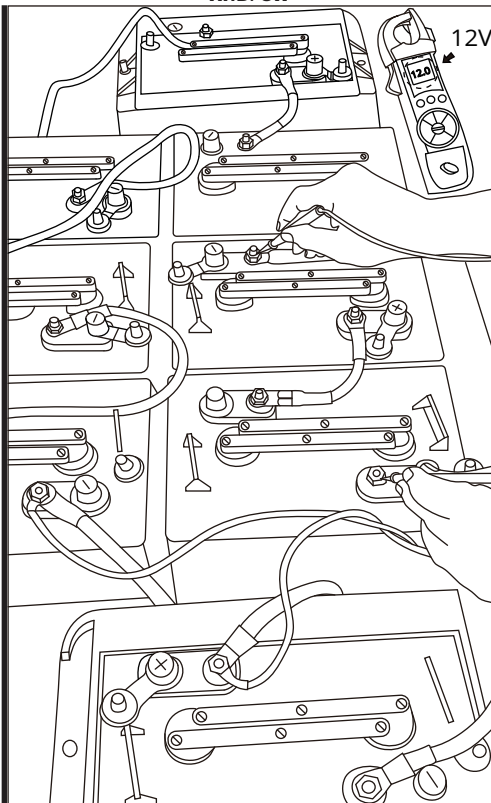
# INSTALLATION



## HOW TO CONNECT POWER HARNESS TO YOUR GOLF CART

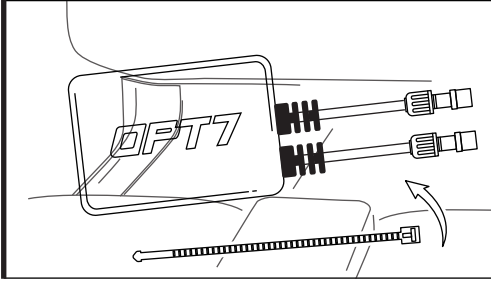
- If it is a 12V battery, you can install it according to this diagram.
- Connect the Red wire (+) of power harness to the golf cart battery's positive terminal.
- Connect the Black wire (-) of power harness to the golf cart battery's negative terminal or an unpainted area on your golf cart's frame.

AND/OR



- For example, there are a total of 8 6V batteries in the picture. Use the meter to measure and confirm 12V.
- Connect the Red wire (+) of power harness to the golf cart battery's positive terminal.
- Connect the Black wire (-) of power harness to the golf cart battery's negative terminal or an unpainted area on your golf cart's frame.

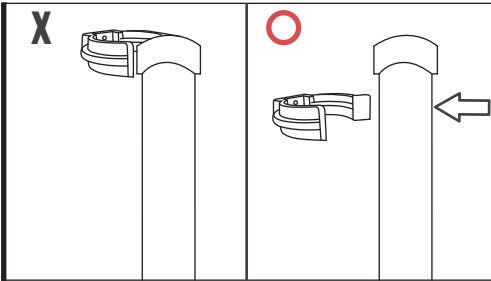
# INSTALLATION



## STEP 2

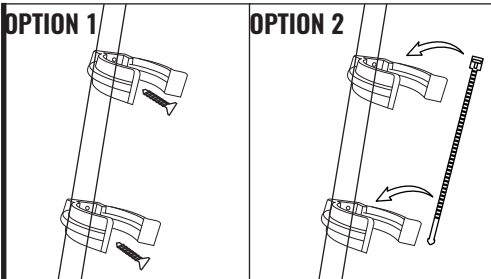
Secure control box in desired location with Velcro or zip ties.

\* CONTROL BOX NOT WATERPROOF  
Ensure the control box is safely and securely hidden from elements of moisture.



## STEP 3

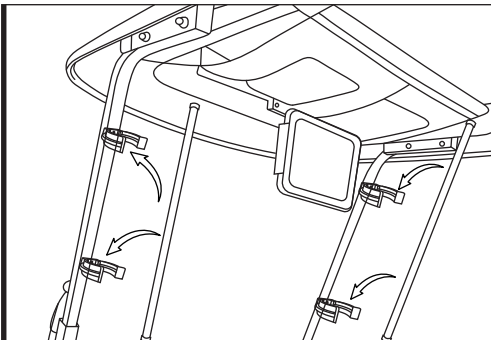
Install the mounting brackets in the correct positions, as shown in the illustration on the left.



## STEP 4

\* The mounting brackets can be installed using either Option 1 or Option 2.  
Option 1: Secure the mounting brackets with screws.

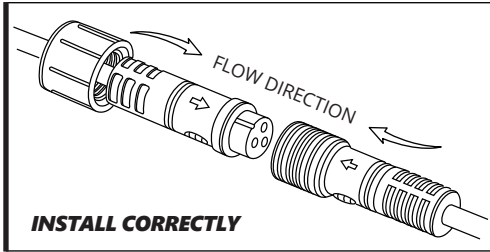
Option 2: Secure the mounting brackets using zip ties.



## STEP 5

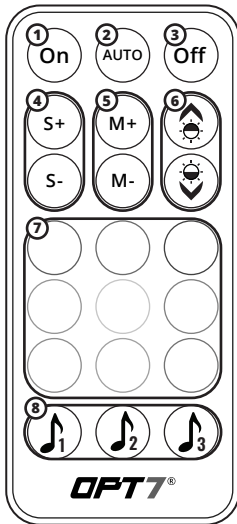
Install the light tubes onto the mounting brackets, and route all wiring away from moving components.

# INSTALLATION



## STEP 6

Connect the round connector from the light tubes to the control box and ensure that each component is properly installed and tightened.

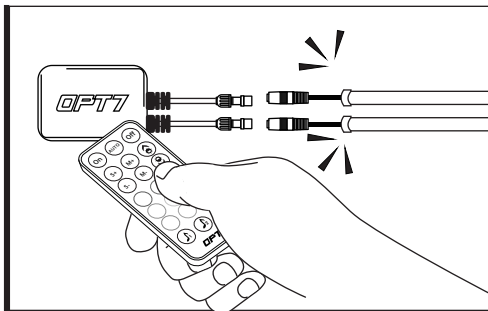


## STEP 7

Using the included 21Key E-Z Remote, select your desired color or pattern.

- |   |                                     |
|---|-------------------------------------|
| 1 | Power-ON                            |
| 2 | Automatic Color Change              |
| 3 | Power-OFF                           |
| 4 | Speed +/- 10 Levels                 |
| 5 | Mode +/- 24 Modes                   |
| 6 | Dimmer 10 Levels                    |
| 7 | Color Selection 9 Colors            |
| 8 | Sound Sync Color Selection 3 Colors |

NOTE: When you use this product, stay within 10m/33ft from the control box.



## HOW TO PAIR THE REMOTE?

### *Pair the Device:*

To pair the remote, reconnect the power, then aim the remote at the control box and hold the ON button until the LED tubes flash white.

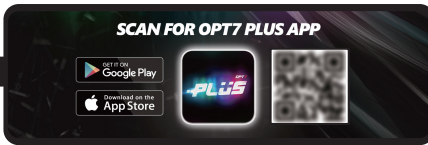
### *Unpair the Device:*

To unpair the remote, reconnect the power, then aim the remote at the control box and hold the OFF button until the LED tubes flash white.

# INSTALLATION

## STEP 8

Please scan the QR code on the side of the control box and download the OPT7 PLUS App for the best experience.



Please scan to see the OPT7 PLUS user guide.  
<https://support.opt-7.com/391968-OPT7-AURA-PLUS-Application-User-Guide>

## DISCLAIMER

OPT7 Lighting is not liable for damages or personal injuries while installing this product. The Installation Guide is intended as assistance to reduce setup time. OPT7 Lighting assumes no responsibility for improper installation. If you are unfamiliar with your vehicle or inexperienced with aftermarket upgrades, please seek professional assistance.

OPT7 recommends installation for safety and guidance.  
Modified installations or installation recommendations not specified by  
OPT7 Lighting will void product warranty.