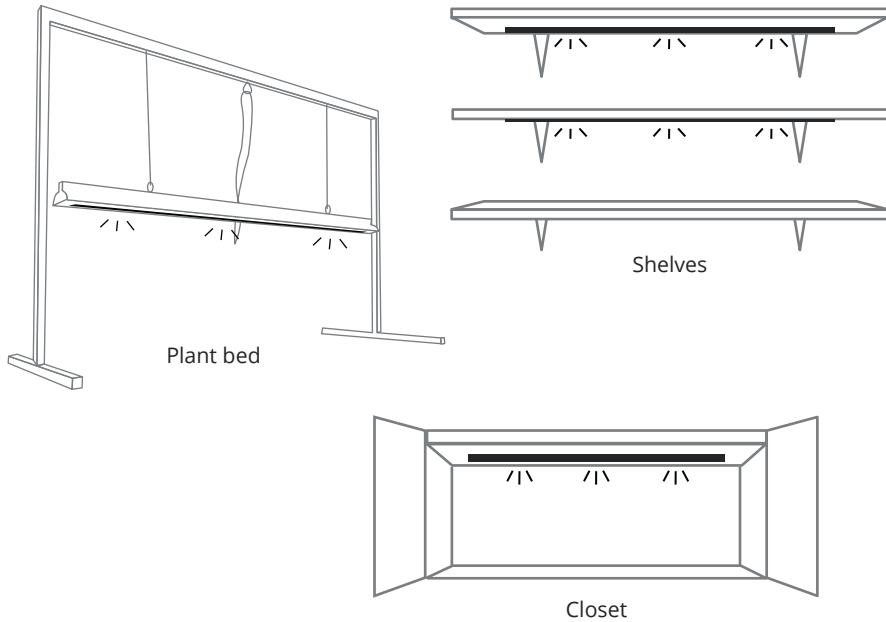


Extension Pack Compatibility

Maximize your lighting experience with additional strips.
No cutting required. Just connect and light.

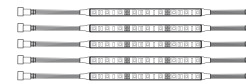
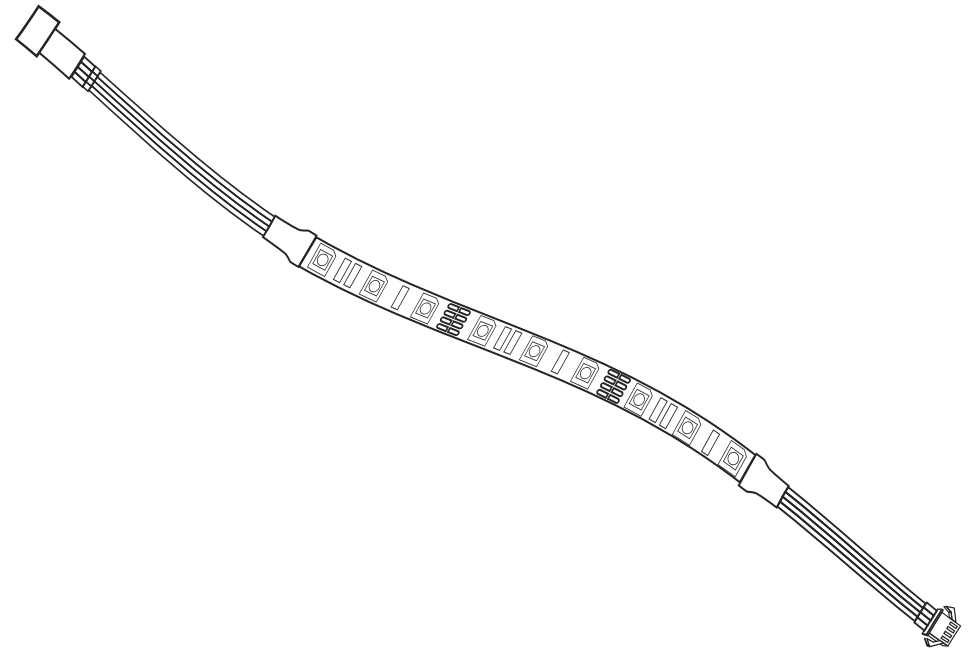
Each SLR Grow Strip Kit can be expanded and adapted with additional strips.
SLR Grow Strip extension packs can be purchased separately for more elaborate designs and plant projects you have in mind.

Grow Strip Location Ideas



LED GROW STRIP PLANT MANAGEMENT KIT

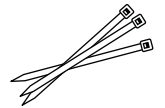
Five 20-Inch Premium Strips



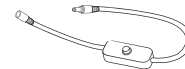
20-Inch grow strip **x5**



Power Adapter **x1**
*Optional



Zip Ties Bundle **x1**



Inline Power Switch **x1**



Bag of Screws and Wall Mounts **x1**



40-Inch Extension **x1**



Adapter Cord Connector **x1**



Surface Preparation Pad **x1**

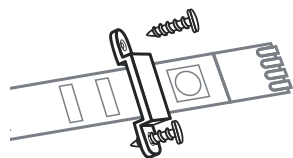
Prep

1. Test multiple lighting locations using masking tape to hold SLR-Strips in place.
2. Clean surface for secure mounting and allow time to dry.
3. Apply the SLR-Adhesive Booster onto the mounting surface and allow time to fully dry.



Mounting

1. Peel off tape backing to expose the tape. Avoid touching the adhesive side of the tape to ensure maximum bonding.
2. Starting from one end of the Grow Strips, begin sticking the Grow Strips in place. Ensure the Grow Strip is completely flush with the surface and that there are no gaps.
3. Firmly press and hold the Grow Strips to the surface with your fingers for about 10 seconds at every inch. This will allow the SLR-Adhesive Booster and Grow Strips to securely adhere to each other for long-lasting use.
4. For mounting on wood or drywall surfaces, use the SLR-Mounts to permanently secure the Grow Strips in place. This step is optional, but recommended for cabinetry and outdoor usage.



Connecting The Led Grow Strip

