

# AURA™ PRO

## MOTORCYCLE CRUISER

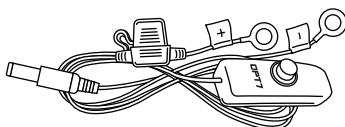
BLUETOOTH OPT7 GLOW APP & REMOTED CONTROLLED

### INSTALLATION GUIDE

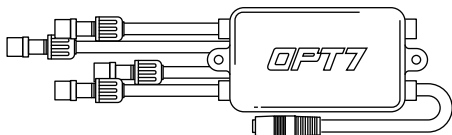
## COMPONENTS



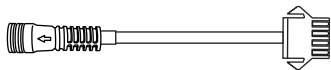
LED LIGHT STRIPS



POWER HARNESS WITH ON/OFF SWITCH



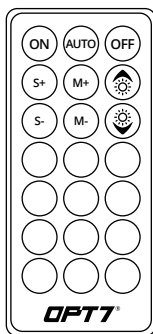
AURA CONTROL BOX (SCAN QR CODE FOR APP USER GUIDE)



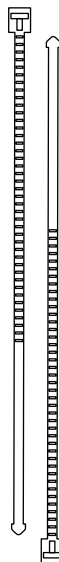
CONVERTER



EXTENSION WIRES-2



HAND HELD REMOTE

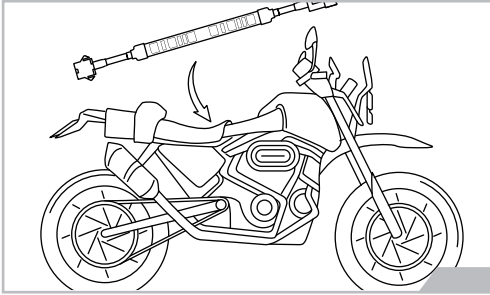


ZIPTIES

# INSTALLATION

## STEP 1

Inspect kit to ensure all contents was included.

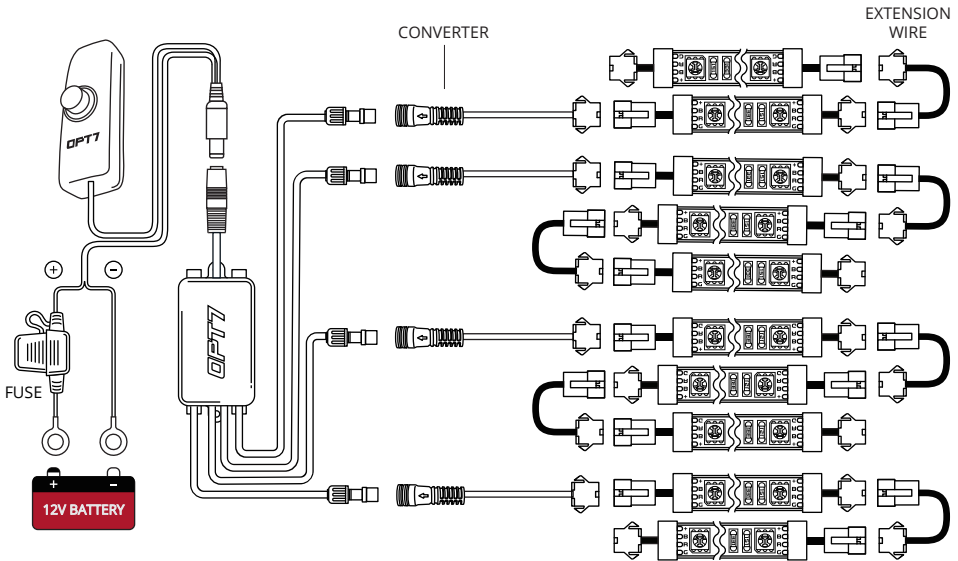


## STEP 2

Decide where to locate the light strips and ensure wiring has enough length for control box to be installed in desired location.

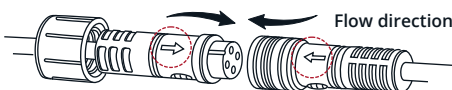
### **IMPORTANT NOTE!! Before You Start**

We provide multiple sets of extension wires for you to configure. You can quickly extend them wherever you want to install.



### **⚠ IMPORTANT ⚠**

**BE SURE TO CONFIRM THE CORRECT DIRECTION OF THE ARROW!!  
TO AVOID PRODUCT DAMAGE DUE TO INCORRECT INSTALLATION.**



**CORRECT INSTALLATION**



Note the  
direction of  
the arrows

# INSTALLATION

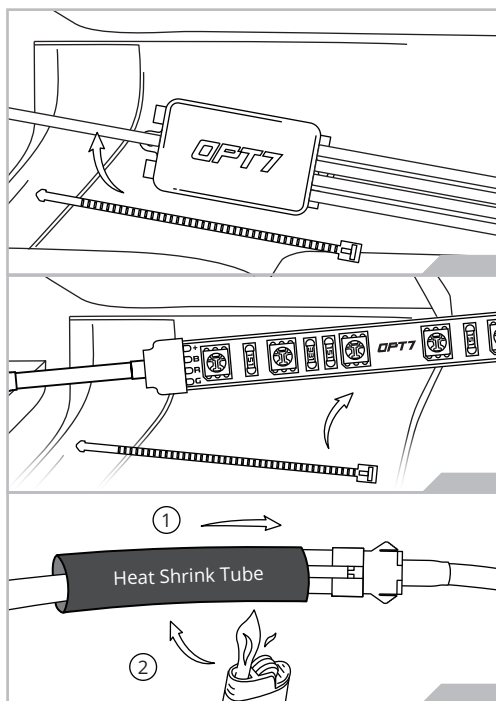


## WARNING

1. Please ensure that the LED bars or strips/control box/wiring all are mounted in areas where will not exceed 85°C or 185°F.
2. Connect only to a 12V battery. Using other voltages may cause overload and serious safety risks.

## IMPORTANT

\*Turning off the OPT7 GLOW completely helps avoid excessive battery consumption and extends the lifespan of the OPT7 light kits.



## STEP 3

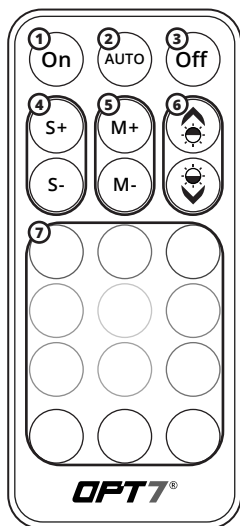
After testing, secure the control box in a desire location using the Velcro or zip-ties provided.

## STEP 4

Secure the light strips using the zip ties to tie all the wiring away from the moving components.

### \* IMPORTANT:

The LED connectors are not waterproof. You will need to use HEAT SHRINK TUBE or ELECTRICAL TAPE around the LED connectors to ensure the longevity of the lighting kit.

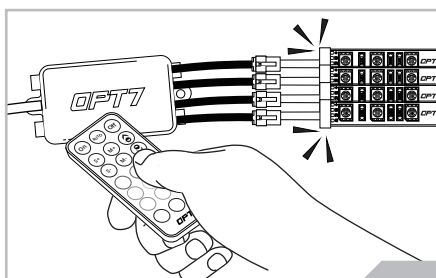


## STEP 5

Using the included 21Key E-Z Remote, select your desired color or pattern.

- |   |                          |
|---|--------------------------|
| 1 | Power-ON                 |
| 2 | Automatic Color Change   |
| 3 | Power-OFF                |
| 4 | Speed +/- 10 Levels      |
| 5 | Mode +/- 24 Mode         |
| 6 | Dimmer 10 Levels         |
| 7 | Color Selection 9 Colors |

NOTE: When you use this product, keep it within 10m/33ft as much as possible.



## HOW TO PAIR THE REMOTE?

### *Pair the Device:*

To pair the remote, reconnect the power, then aim the remote at the control box and hold the ON button until the LED strips flash white.

## QR CODE TO DOWNLOAD



SCAN FOR APP

**OPT7<sup>®</sup>**  
**GLOW**



Download the free "OPT7 GLOW" App

- App iOS (12+) available on App Store
- Android (8+) available on Google Play

## STEP 6

Download the OPT7 GLOW to have the best experience.



Please scan to see the OPT7 GLOW user guide.

<https://wintis.ladesk.com/362302-OPT7-AURA-Glow-Application-User-Guide>

**OPT7<sup>®</sup>**

## **| DISCLAIMER**

OPT7 Lighting is not liable for damages or personal injuries while installing this product. The Installation Guide is intended as assistance to reduce setup time. OPT7 Lighting assumes no responsibility for improper installation. If you are unfamiliar with your vehicle or inexperienced with aftermarket upgrades, please seek professional assistance.

OPT7 recommends installation for safety and guidance.

Modified installations or installation recommendations not specified by OPT7 Lighting will void product warranty.