

STEP
12**TORQUE SCREW REINSTALLATION**

Begin putting the 3 Torque Screws back into the new Outlaw X Headlights and test the DRL functionality by turning on your DRL headlights from the inside of your vehicle before finishing the install.

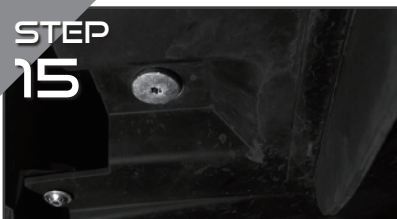
STEP
13 **H11 BULB CONNECTION**

The OPT7 Outlaw X only allows for H11 bulb sizes. So the H13 bulb that originally worked with your Jeep Renegade will no longer fit into your new Outlaw X Housing.

You will need to purchase H11 bulbs to use with Outlaw X. You'll need to then be able to remove the rubber garment, insert the bulbs into the Outlaw X housing, and then reconnect the headlight powerline.

STEP
14**TEST HEADLIGHT PLACEMENT ACCURACY**

Make sure to test your LED or HID Headlights' accuracy prior to finalizing the entire placement.

STEP
15**REINSTALL BUMPER**

Replace all bumper screws and snap the bumper plugs and tabs back into place.

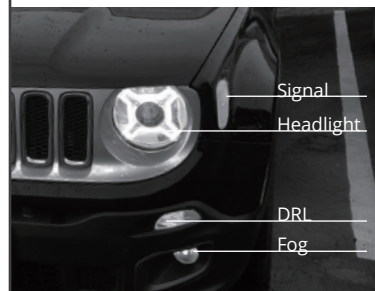
STEP
16 **INSTALLATION COMPLETE**

Now that your install is complete make sure to follow us on social media to tag us in all of your amazing photos of your new Outlaw X Headlights so we can show off your Renegade!

If you have any questions about your 60 days Warranty or issues with your Outlaw X Headlight, please email us right away at Support@opt-7.com, and we will respond to your email within 1-2 business days.

JEEP RENEGADE OUTLAW X HEADLIGHTS

INSTRUCTION MANUAL


**JEEP RENEGADE
2015-2017 MODELS**
**TOOLS REQUIRED**

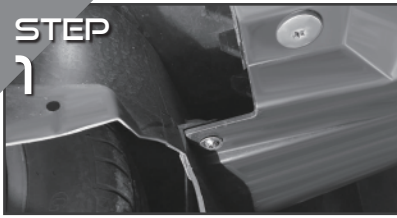
Plastic Trim Removal Tool
(or Cloth Covered Trim
Remover Screwdriver)



Philips Screwdriver

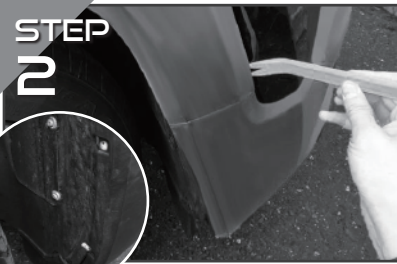
Torque Screwdriver:
Multi-Sized Tool

Ratchet Wrench

STEP
1

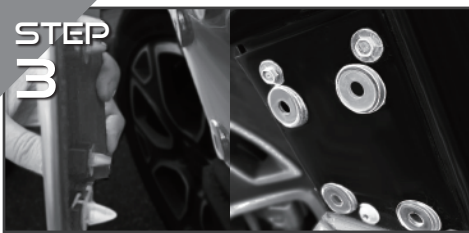
TORQUE SCREW REMOVAL

Begin the Outlaw X OEM Headlight installation process by removing both Torque Screws on each side of the underneath the front bumper in front of the wheel well. (Tools: Torque Screwdriver Multi-Size Tool)

STEP
2

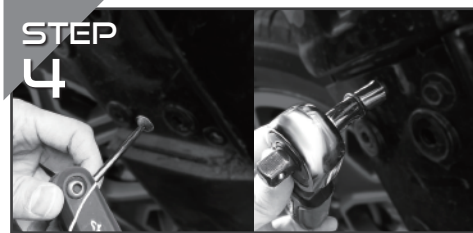
REMOVE WHEEL WELL SCREWS AND WHEEL WELL COVER

Now remove both Wheel Well Screws holding the Wheel Well Plate onto the Front Bumper. (Tools: Screwdriver) Next use a Plastic or Cloth Covered Trim Remover Tool to remove the front the front bumper. (Tools: Plastic or Cloth Covered Trim Kit Remover Tool)

STEP
3

PULL BUMPER TABS

Once pulled back, the face of the bumper will be removed and there should be 4 locking tabs holding it in place. Remove the bumper cover after separating the tabs. (There are replacement tabs within the box if you break any during removal).

STEP
4

REMOVE BUMPER SCREWS AND BOLTS

Now that you have access to the front bumper, begin removing the single torque screw and both bolts on each side holding the front bumper in place. (Tools: Torque Screwdriver and Ratchet Wrench)

STEP
5

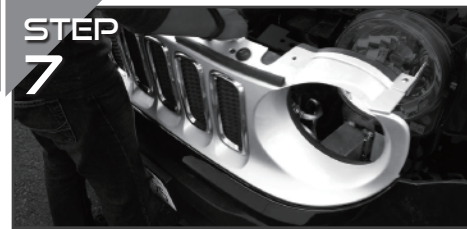
BUMPER REMOVAL CONTINUED

After removing the screws and bolts from your bumper, use the Trim Kit Tool to loosen the two clips on each side of the bumper. (Tools: Trim Kit Tool)

STEP
6

UNSCREW BUMPER TORQUE SCREWS

Finally, unscrew the 2 torque screws next to the hood latch. (Tools: Torque Screwdriver)

STEP
7

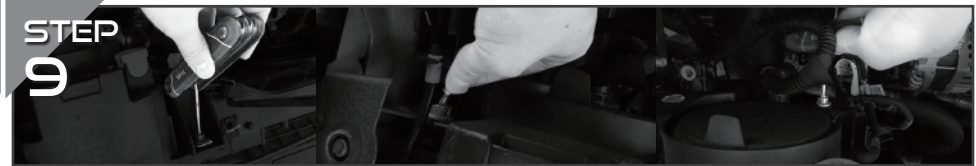
REMOVE THE BUMPER COMPLETELY

Now you are able to remove the bumper completely from the front of your vehicle by lifting slightly up, out, and away from your Renegade.

STEP
8

BULB ADJUSTMENTS

Start by unscrewing and twisting the 3 Bulbs shown above before removing your Renegade's OEM Headlight: 1. Fog Bulbs (if applicable) 2. DRL Bulbs 3. Turn Signal You will only be replacing the DRL Bulb.

STEP
9

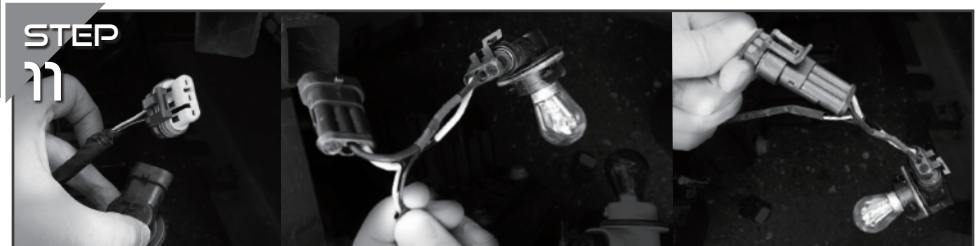
REMOVE 3 TORQUE SCREWS

Next begin removing the actual headlamp. Start by removing the 3 Torque Screws. (Tools: Torque Wrench)

STEP
10

POWER CORD REMOVAL & OUTLAW X CONNECTION

Remove the Power Cord Connection from your vehicle's headlight. Then put in your entire Outlaw X Headlight and reconnect the power cord to the Outlaw X Headlight connection.

STEP
11

BULB RECONNECTION

Remove the OEM DRL Bulb from the OEM Male Connector. Put the OEM DRL bulb into the Outlaw X Male Wire. Connect the OEM DRL Male Wire to the Outlaw X Female Wire. Plug the Bulb section back into the applicable socket in the Outlaw X Housing.