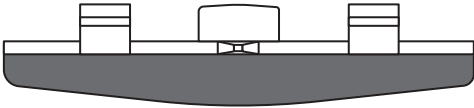
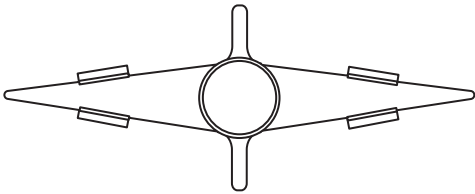
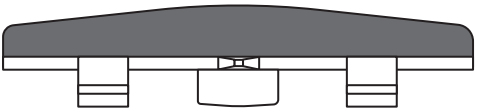
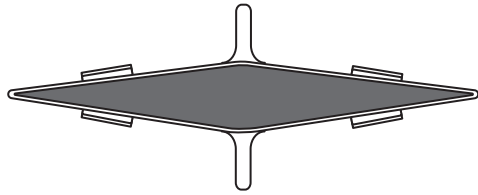


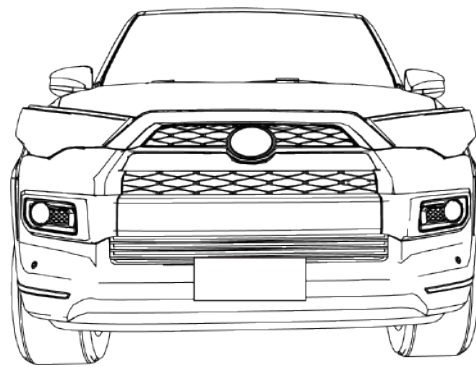
OPT7[®]

GRILLE LIGHT PODS

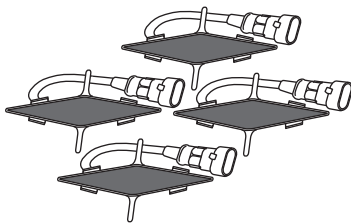
INSTALL GUIDE



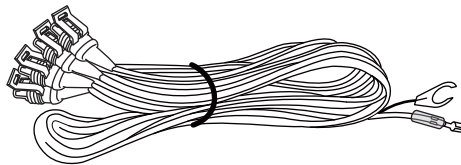
5th GEN 4RUNNER 2014-2024



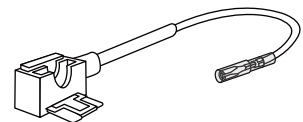
WHAT'S INCLUDING



Grille light pods



Power Harness

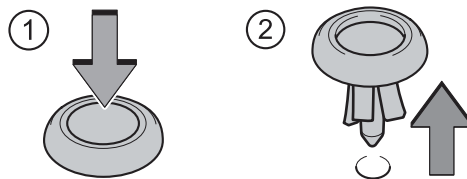
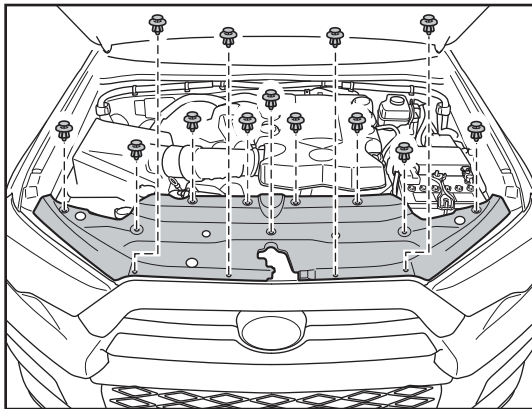


**15A Fuse tap
(Mini Low Profile)**

INSTALLATION

STEP 1

Before installation, verify all product items. Then, open the hood and remove the engine compartment covers.

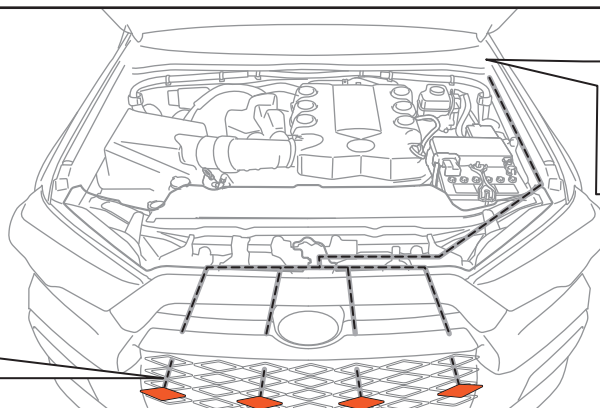
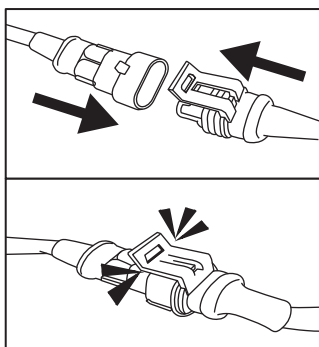


Remove the clips

1. Press the center portion
2. Push up

STEP 2

Refer to the wiring diagram below. Insert the light pods through the front grille and connect them to the wiring harness. Then, route the harness through the engine bay firewall and into the cabin.

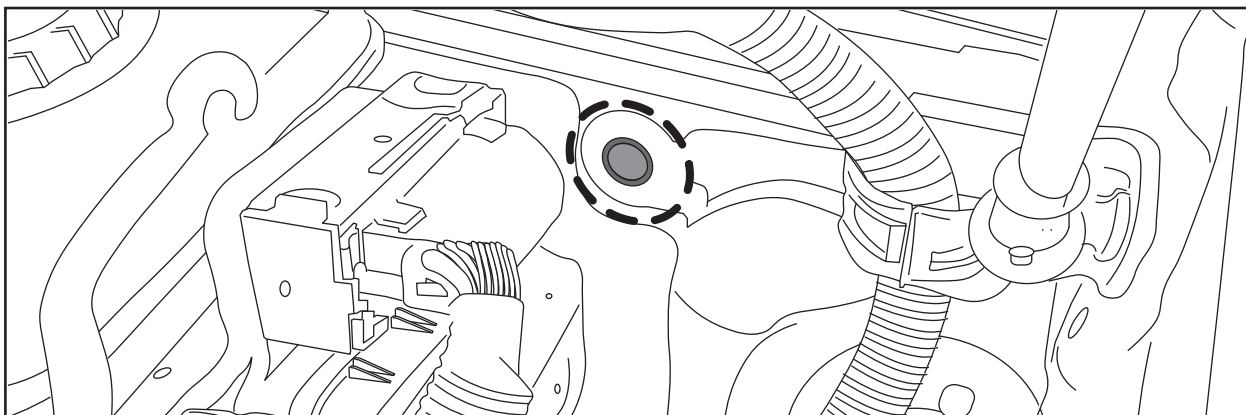


through the wire
from the firewall
to the cab

INSTALLATION

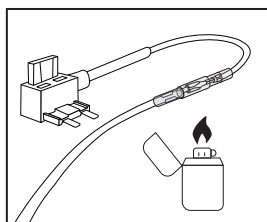
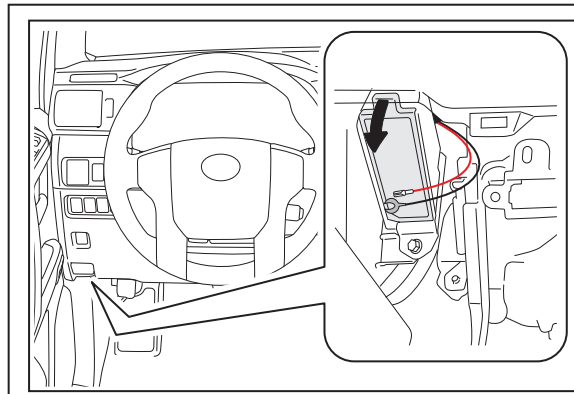
STEP 3

It is recommended to pass the wiring through the grommet on the engine bay firewall.

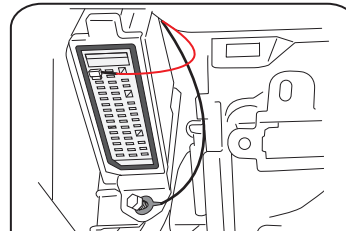


STEP 4

Route the power wire to the driver's fuse box. Connect the fuse tap to the positive wire, secure it with heat-shrink tubing, and plug it into a suitable fuse slot (10A or 15A). Ground the negative wire to a metal screw on the fuse box.



Connect the fuse tap to the positive wire then heat the heat-shrink tube.

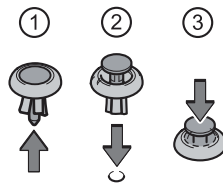
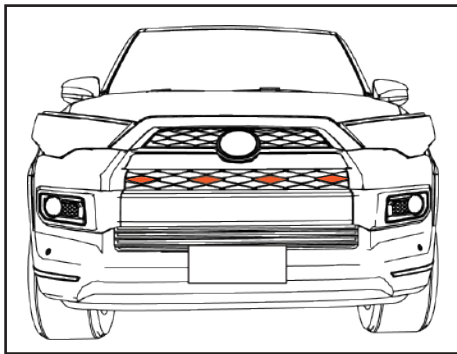


Plug fuse tap into a suitable fuse slot (typically "TAIL"). The negative to a metal screw on the fuse box.

INSTALLATION

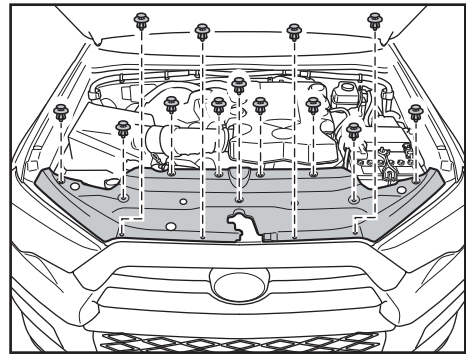
STEP 5

Once the wiring is complete, start the vehicle and turn on the lights to verify proper function. If everything is working correctly, reinstall the engine compartment cover.



Install the clips

1. Push up center portion
2. Insert
3. Press



DISCLAIMER

OPT7 Lighting is not liable for damages or personal injuries while installing this product. The Installation Guide is intended as assistance to reduce setup time. OPT7 Lighting assumes no responsibility for improper installation. If you are unfamiliar with your vehicle or inexperienced with aftermarket upgrades, please seek professional assistance.

OPT7 recommends installation for safety and guidance. Modified installations or installation recommendations not specified by OPT7 Lighting will void product warranty.