

AURA™

DOOR ASSIST AUX WIRING

INSTALLATION GUIDE

AUX WIRING FOR DOOR/DOME LIGHT

There are two ways the AUX WIRE / Door Assist on the AURA control box can be connected on the vehicle in order to activate the door assists feature. Door assist allows you to choose the desired color choice upon selection on the "OPT7 CONNECT" app.

This feature will activate when the AUX wiring is connected to the positive and negative wiring of dome light or door light.

(*Please check the following wiring diagram before using this function to prevent incorrect installation)

*** NOTE: Trigger wire for door light is recommended if your dome light lights up progressively when opening door.**

DISCLAIMER

OPT7 Lighting is not liable for damages or personal injuries while installing this product. The Installation Guide is intended as assistance to reduce setup time. OPT7 Lighting assumes no responsibility for improper installation.

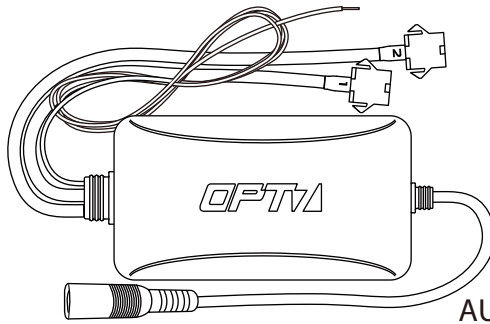
If you are unfamiliar with your vehicle or inexperienced with aftermarket upgrades, please seek professional assistance.

OPT7 recommends installation for safety and guidance.

Modified installations or installation recommendations not specified by OPT7 Lighting will void product warranty.

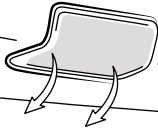
OPTION A (SINGLE AUX WIRE)

FOR DOOR LIGHT WIRING



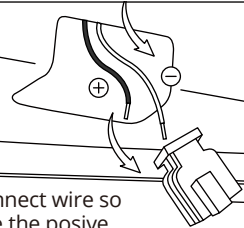
AURA PRO

STEP 1



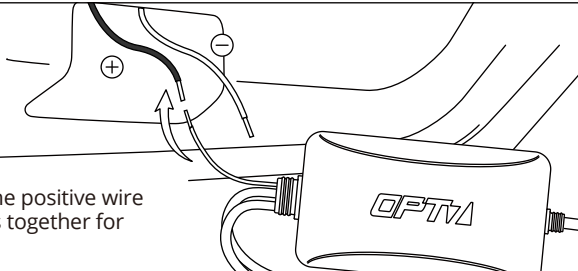
On the driver side door, locate the door/courtesy light. Remove the plastic cover.

STEP 2



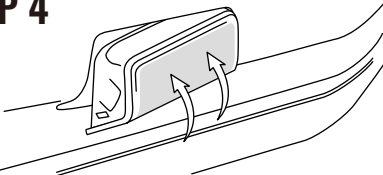
Unplug the connect wire so you may locate the positive gauge trigger wire.

STEP 3



Connect the AUX wire to the positive wire by twisting the metal wires together for the door light.

STEP 4



Place the light back in.

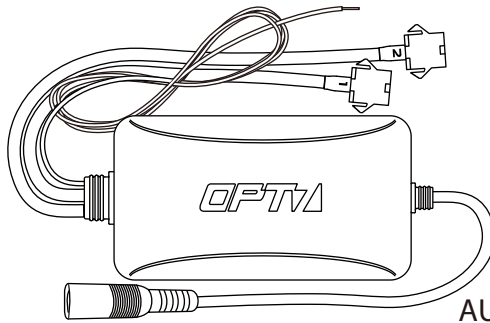
STEP 5



Done

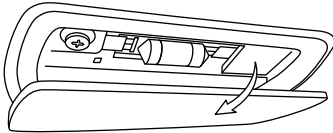
OPTION A (SINGLE AUX WIRE)

FOR DOME LIGHT WIRING



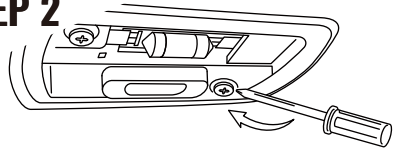
AURA PRO

STEP 1



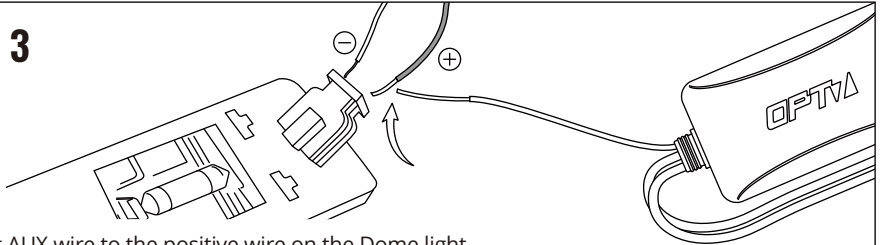
Remove the dome light plastic cover.

STEP 2



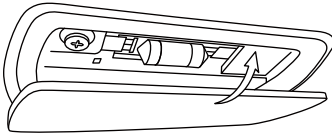
Using a screwdriver, remove the two Phillips-head screws on the cover. Next, remove the dome light module, locate the power wires.

STEP 3



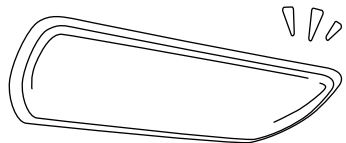
Connect AUX wire to the positive wire on the Dome light.

STEP 4



Place the light back in.

STEP 5



Done

OPTION B (DOUBLE AUX WIRES)

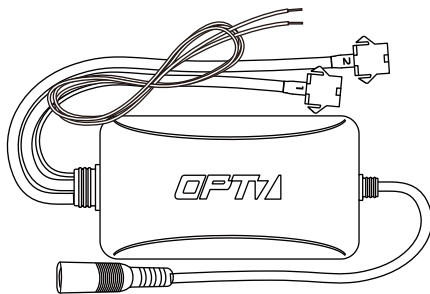
FOR DOOR LIGHT WIRING



AURA ORIGINAL AUX WIRING FOR DOME/DOOR LIGHT

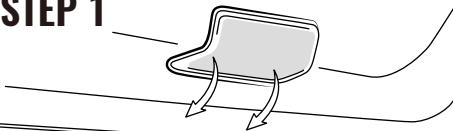
This feature activates white light only.

AURA ORIGINAL



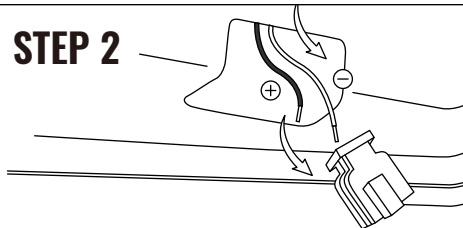
AURA PRO

STEP 1



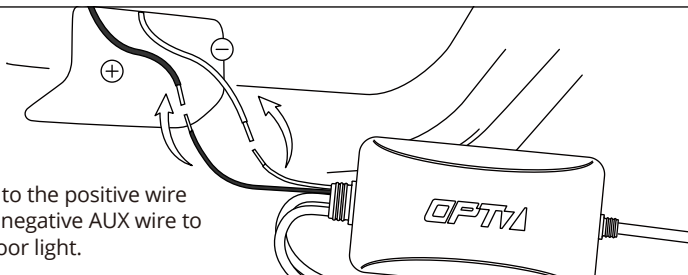
On the driver side door, locate the door/courtesy light. Remove the plastic cover.

STEP 2



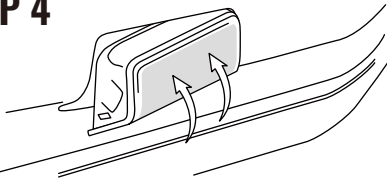
Unplug the connect wire

STEP 3



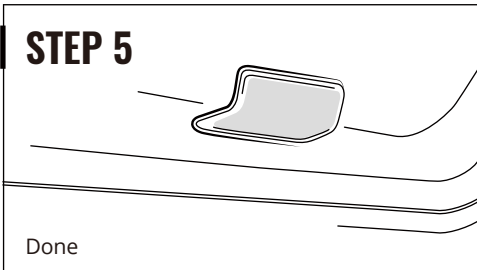
Connect positive AUX wire to the positive wire on the door light. Connect negative AUX wire to the negative wire on the door light.

STEP 4



Place the light back in.

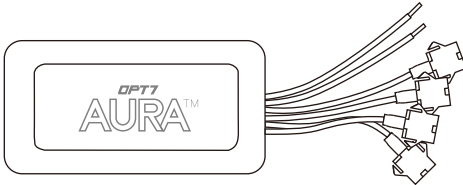
STEP 5



Done

OPTION B (DOUBLE AUX WIRES)

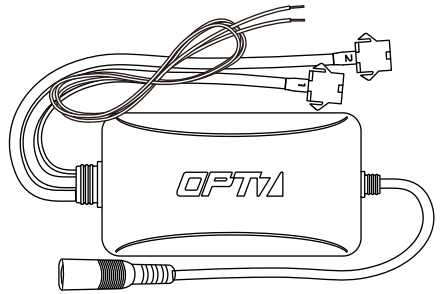
FOR DOME LIGHT WIRING



AURA ORIGINAL AUX WIRING FOR DOME/DOOR LIGHT

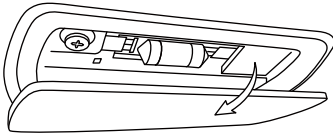
This feature activates white light only.

AURA ORIGINAL



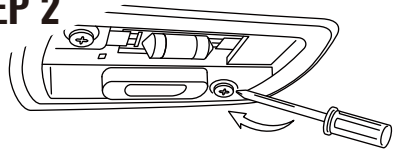
AURA PRO

STEP 1



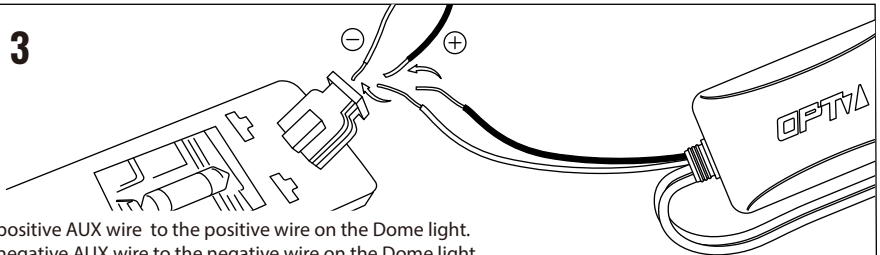
Remove the dome light plastic cover.

STEP 2



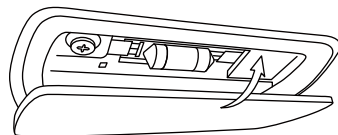
Using a screwdriver, remove the two Phillips-head screws on the cover. Next, remove the dome light module, locate the power wires.

STEP 3



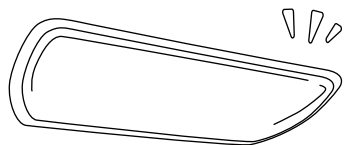
Connect positive AUX wire to the positive wire on the Dome light.
Connect negative AUX wire to the negative wire on the Dome light.

STEP 4



Place the light back in.

STEP 5



Done